







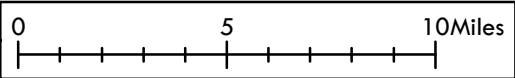
STREAM QUALITY

CLEARFIELD COUNTY, PA

51

Legend

-  Cold water fish
-  Exceptional value waters
-  High quality waters
-  Trout stocking
-  Warm water fish
-  Other streams

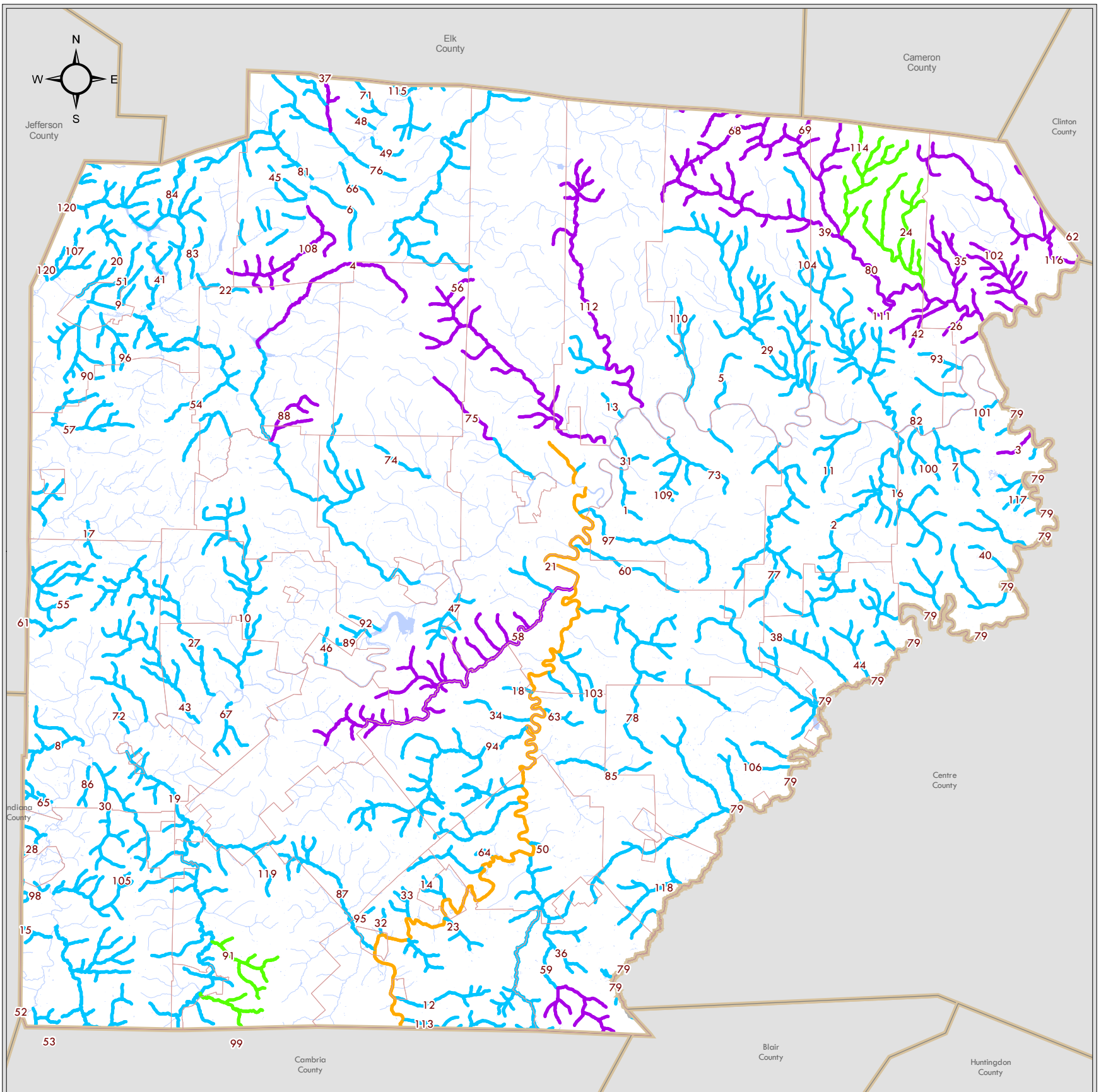


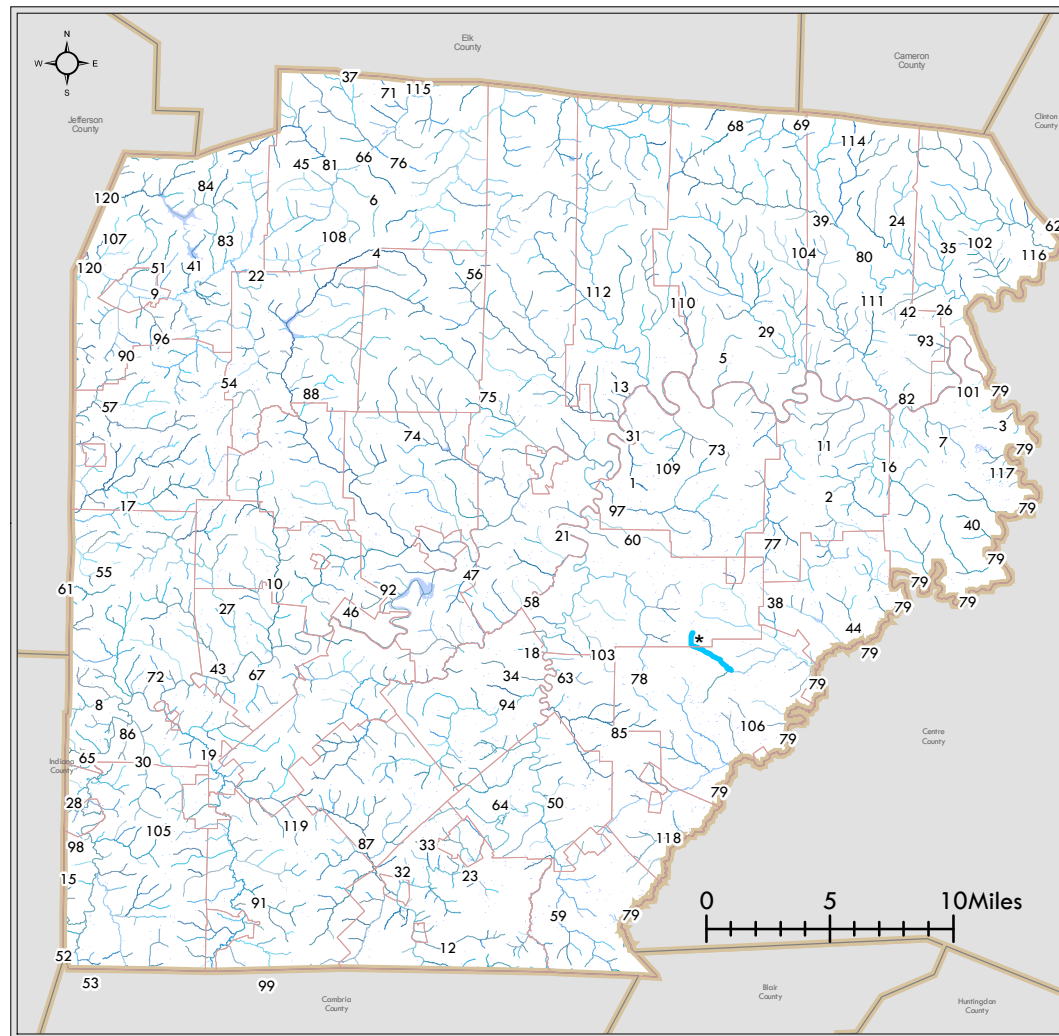
Map notes:
Stream quality categories based on DEP stream quality classification from the PA State Water Plan

Non-categorized waterways represent streams of no explicitly-specified value

Data and services provided by DEP, PASDA, and Clearfield County GIS Department

Map created by Clearfield County GIS Department





* - Little Laurel Run tributary recently given cold-water exceptional status by DEP (8.8.06)

Stream Number Key

- | | | |
|-----------------------------------|-------------------------------|------------------------------------|
| 1 - Abes Run | 41 - Gravel Lick Run | 81 - Mountain Run |
| 2 - Alder Run | 42 - Grimes Run | 82 - Mowry Run |
| 3 - Ames Run | 43 - Haslett Run | 83 - Muddy Run |
| 4 - Anderson Creek | 44 - Hawk Run | 84 - Narrows Creek |
| 5 - Bald Hill Run | 45 - Heath Run | 85 - North Branch Upper Morgan Run |
| 6 - Bark Camp Run | 46 - Hiles Run | 86 - North Run |
| 7 - Basin Run | 47 - Hogback Run | 87 - North Witmer Run |
| 8 - Bear Run | 48 - Horning Hollow | 88 - Panther Run |
| 9 - Beaver Run | 49 - Horning Run | 89 - Passmore Run |
| 10 - Bell Run | 50 - Japling Run | 90 - Pentz Run |
| 11 - Big Run | 51 - Juniata Run | 91 - Pine Run |
| 12 - Blain Run | 52 - Kilns Run | 92 - Porter Run |
| 13 - Bloody Run | 53 - Kings Run | 93 - Potter Run |
| 14 - Blue Run | 54 - Laborde Branch | 94 - Potts Run |
| 15 - Boiling Spring Run | 55 - Laurel Run | 95 - Raccoon Run |
| 16 - Browns Run | 56 - Lick Run | 96 - Reisinger Run |
| 17 - Buck Run | 57 - Limestone Run | 97 - Roaring Run |
| 18 - Cherry Run | 58 - Little Clearfield Creek | 98 - Rock Run |
| 19 - Chest Creek | 59 - Little Muddy Run | 99 - Rogues Harbor Run |
| 20 - Clear Run | 60 - Long Run | 100 - Rolling Stone Run |
| 21 - Clearfield Creek | 61 - Lost Run | 101 - Rupley Run |
| 22 - Coal Run | 62 - Lower Three Runs | 102 - Saltlick Run |
| 23 - Cofinan Run | 63 - Lytle Run | 103 - Sanbourn Run |
| 24 - Cole Run | 64 - Maplepole Run | 104 - Sandy Creek |
| 25 - Crawford Run | 65 - Martin Run | 105 - Sawmill Run |
| 26 - Curleys Run | 66 - Matley Hollow | 106 - Shimel Run |
| 27 - Curry Run | 67 - McCracken Run | 107 - Slab Run |
| 28 - Cush Creek | 68 - McNeerney Run | 108 - South Branch Bennett Branch |
| 29 - Deer Creek | 69 - Meeker Run | 109 - Sulphur Run |
| 30 - Deer Run | 70 - Middle Branch Wilson Run | 110 - Surveyor Run |
| 31 - Devils Run | 71 - Mill Run | 111 - Susman Run |
| 32 - Dewitt Run | 72 - Miller Run | 112 - Trout Run |
| 33 - Dotts Hollow | 73 - Millstone Run | 113 - Turner Run |
| 34 - Dunlap Run | 74 - Montgomery Creek | 114 - Twelvemile Run |
| 35 - Dutch Hollow | 75 - Moose Creek | 115 - Tyler Run |
| 36 - East Branch Little Muddy Run | 76 - Moose Run | 116 - Upper Three Runs |
| 37 - East Branch Wilson Run | 77 - Moravian Run | 117 - Weber Run |
| 38 - Emigh Run | 78 - Morgan Run | 118 - Whiteside Run |
| 39 - Gifford Run | 79 - Moshannon Creek | 119 - Wilson Run |
| 40 - Grassflat Run | 80 - Mosquito Creek | 120 - Wolf Run |