

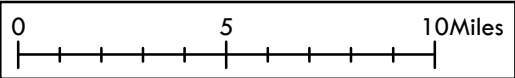
STREAM QUALITY

CLEARFIELD COUNTY, PA

5k

Legend

-  Attaining streams
 -  Streams not surveyed
 - Non-attaining stream causes:**
 -  Abandoned mine drainage
 -  Agriculture
 -  Road Runoff
 -  Unknown, mercury or metals
 -  Natural, other unknown
- labelexport



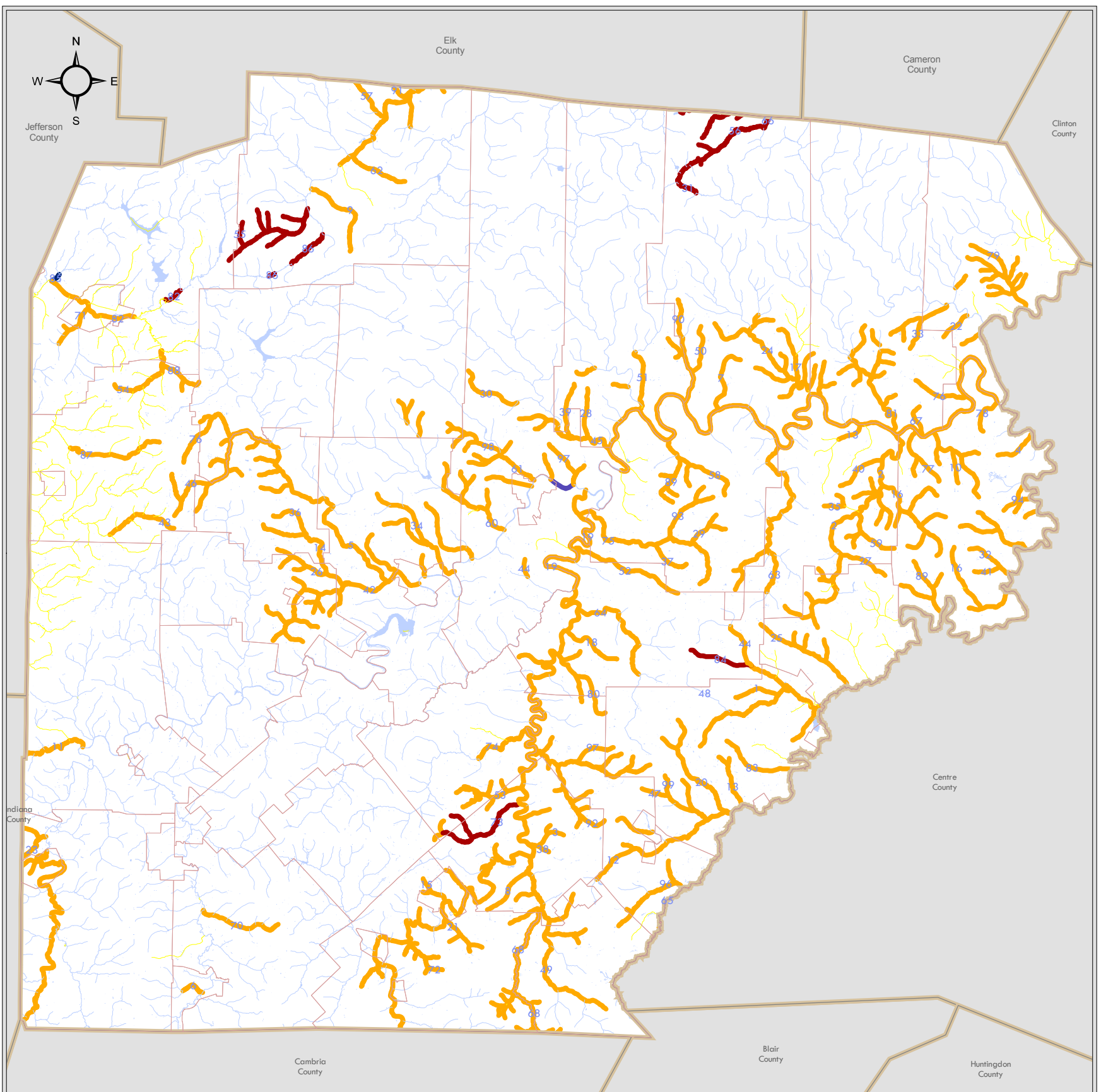
Map notes:

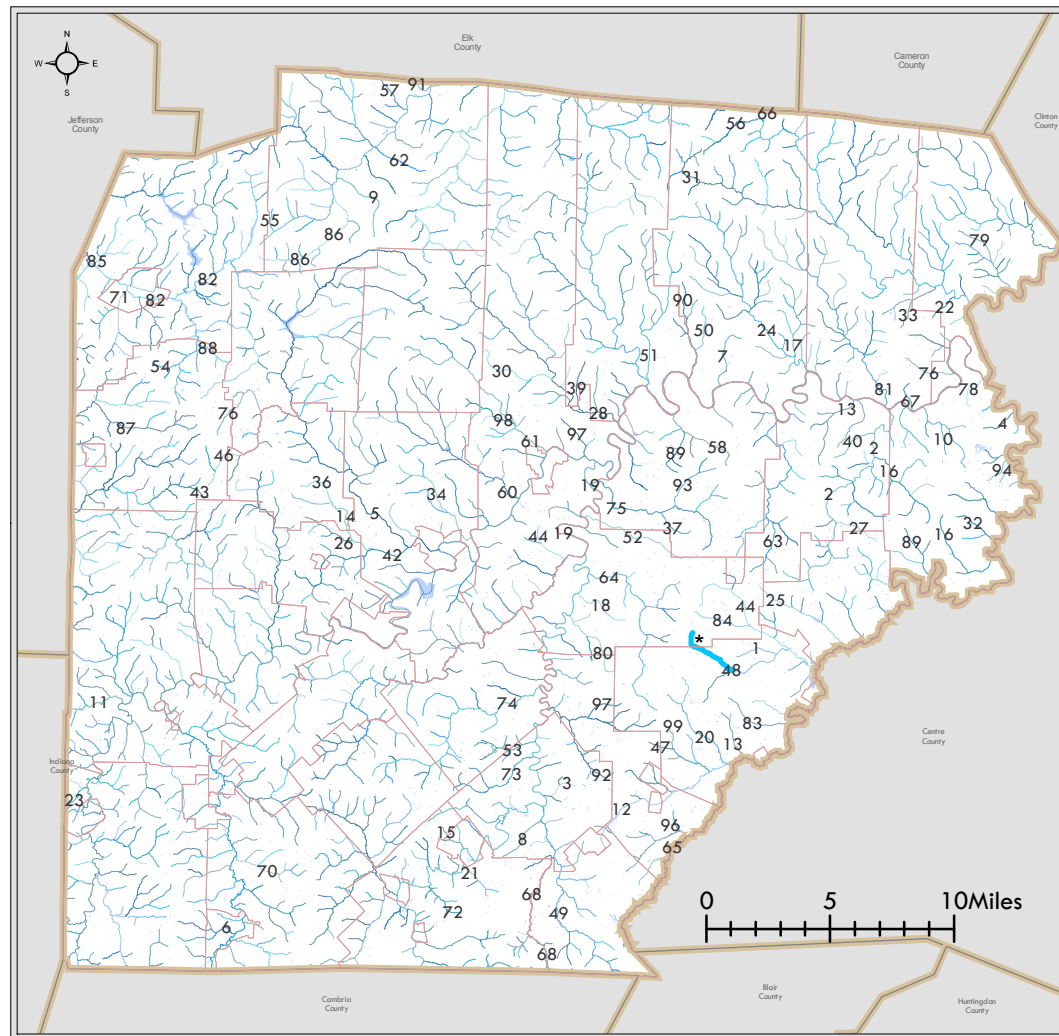
Use of the term "impaired streams" is meant to denote general unhealthiness of a stream system. Other definitions or interpretations of "impaired streams" or other terms such as "impacted streams" may or may not be grouped under this category. non-attaining streams were highlighted in mapping as "impaired".

Attainment status of streams based upon statewide DEP stream data set

Data and services provided by DEP, PASDA, Clearfield County Conservation District, and Clearfield County GIS Department

Map created by Clearfield County GIS Department





* - Little Laurel Run tributary recently given attaining status by DEP (8.8.06)

Stream Number Key

- | | | |
|------------------------|------------------------------------|------------------------------------|
| 1 - Albert Run | 41 - Knox Run | 81 - Sandy Creek |
| 2 - Alder Run | 42 - Kratzer Run | 82 - Sandy Lick Creek |
| 3 - Alexander Run | 43 - Laurel Branch Run | 83 - Shimel Run |
| 4 - Ames Run | 44 - Laurel Run | 84 - Simeling Run |
| 5 - Anderson Creek | 45 - Lick Run | 85 - Slab Run |
| 6 - Ashcraft Run | 46 - Little Anderson Creek | 86 - South Branch Bennett Branch |
| 7 - Bald Hill Run | 47 - Little Beaver Run | 87 - Stump Creek |
| 8 - Banian Run | 48 - Little Laurel Run | 88 - Sugarcamp Run |
| 9 - Bark Camp Run | 49 - Little Muddy Run | 89 - Sulphur Run |
| 10 - Basin Run | 50 - Little Surveyor Run | 90 - Surveyor Run |
| 11 - Bear Run | 51 - Little Trout Run | 91 - Tyler Run |
| 12 - Beaver Run | 52 - Long Run | 92 - Upper Morgan Run |
| 13 - Big Run | 53 - Lost Run | 93 - Valley Fork Run |
| 14 - Bilger Run | 54 - Luthersburg Branch | 94 - Weber Run |
| 15 - Blue Run | 55 - McCracken Run | 95 - West Branch Susquehanna River |
| 16 - Browns Run | 56 - Mc Nerney Run | 96 - Whiteside Run |
| 17 - Buck Run | 57 - Mill Run | 97 - Wolf Run |
| 18 - Camp Hope Run | 58 - Millstone Run | 98 - Woods Run |
| 19 - Clearfield Creek | 59 - Mons Run | |
| 20 - Coal Run | 60 - Montgomery Creek | |
| 21 - Cofinan Run | 61 - Moose Creek | |
| 22 - Curleys Run | 62 - Moose Run | |
| 23 - Cush Creek | 63 - Moravian Run | |
| 24 - Deer Creek | 64 - Morgan Run | |
| 25 - Emigh Run | 65 - Moshannon Creek | |
| 26 - Fenton Run | 66 - Mosquito Creek | |
| 27 - Flat Run | 67 - Mowry Run | |
| 28 - Flegals Run | 68 - Muddy Run | |
| 29 - Forcey Run | 69 - North Branch Upper Morgan Run | |
| 30 - Fork Run | 70 - North Camp Run | |
| 31 - Gifford Run | 71 - Pentz Run | |
| 32 - Grassflat Run | 72 - Pine Run | |
| 33 - Grimes Run | 73 - Pine Run | |
| 34 - Hartshorn Run | 74 - Potts Run | |
| 35 - Hubler Run | 75 - Roaring Run | |
| 36 - Hughey Run | 76 - Rock Run | |
| 37 - Jake Run | 77 - Rolling Stone Run | |
| 38 - Japling Run | 78 - Rupley Run | |
| 39 - Jerry Run | 79 - Saltlick Run | |
| 40 - Kettle Spring Run | 80 - Sanbourn Run | |