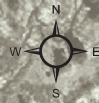
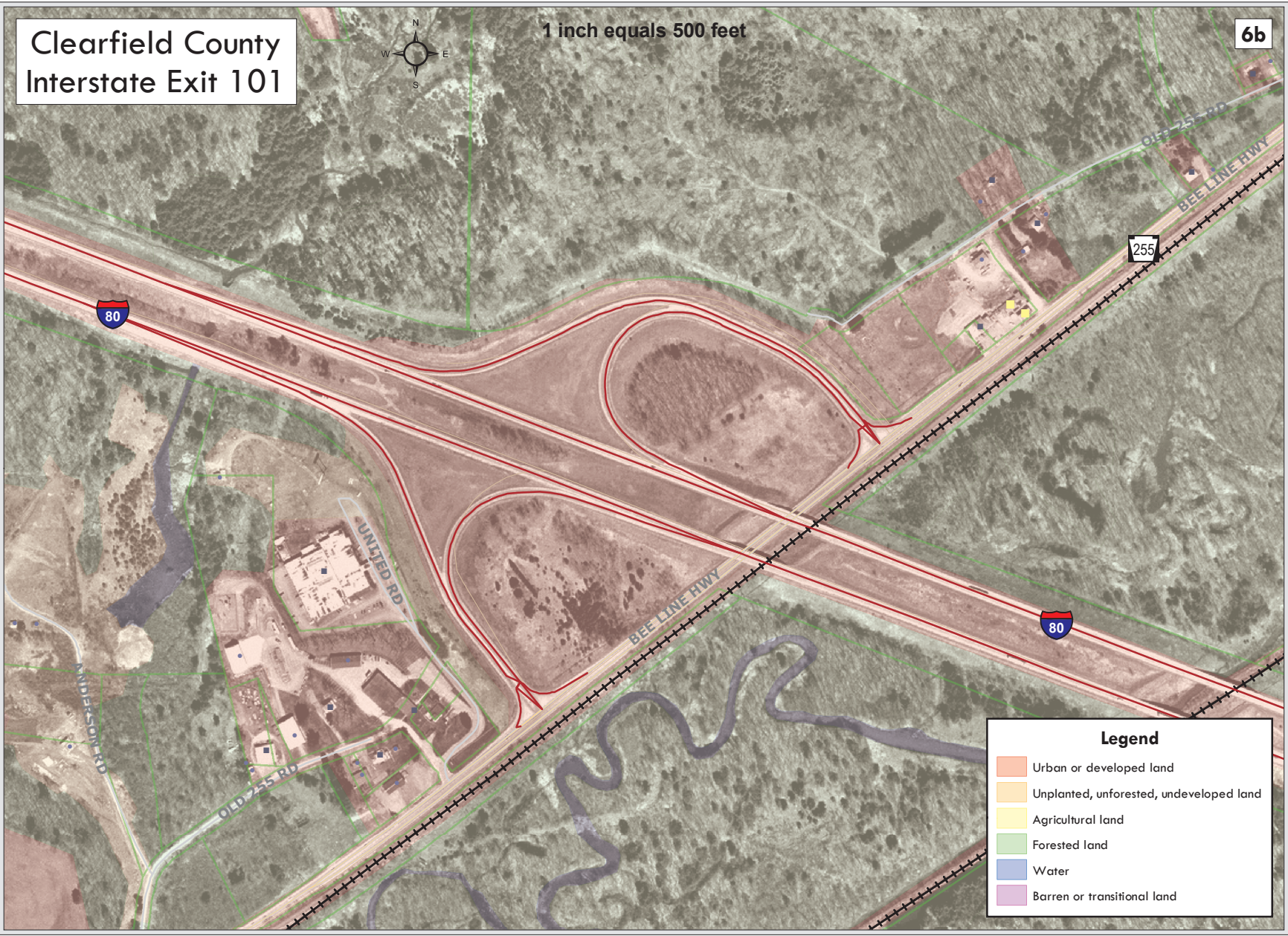


Clearfield County Interstate Exit 101



1 inch equals 500 feet

6b



Legend

- Urban or developed land
- Unplanted, unforested, undeveloped land
- Agricultural land
- Forested land
- Water
- Barren or transitional land

Clearfield County Interstate Exits

Additional map notes:

- Water and sewer service areas estimated for County Water Supply Plan and County Wastewater Plan with the help of local municipal authorities and their engineers
- Land use classifications created by the Clearfield County GIS Department and the Land Analysis Lab at the Pennsylvania State University based on 1997 aerial photography and 2003-2005 parcel and building information

Data and services provided by Penn State, Clearfield County Planning, Clearfield County Department of Assessment, and Clearfield County GIS Department

Map created by Clearfield County GIS Department